



Scan-Med RFC

Formative Years and Perspectives for Customers

8 December 2015

Hans Chr. Wolter

*Success is not final, failure is not fatal:
It is the courage to continue that counts*



The Commissioner's Approach

*The RFCs form the rail freight backbone
of the multimodal Core Network Corridors*

We must increase quality in

Service

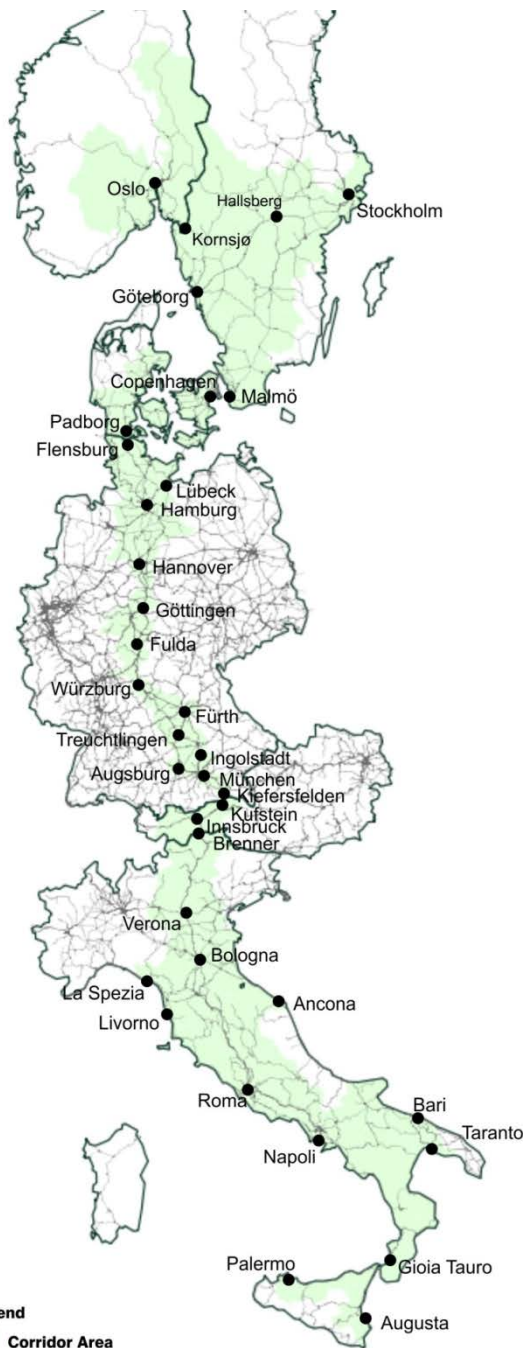
Capacity

Standards

Harmonise rules and procedures

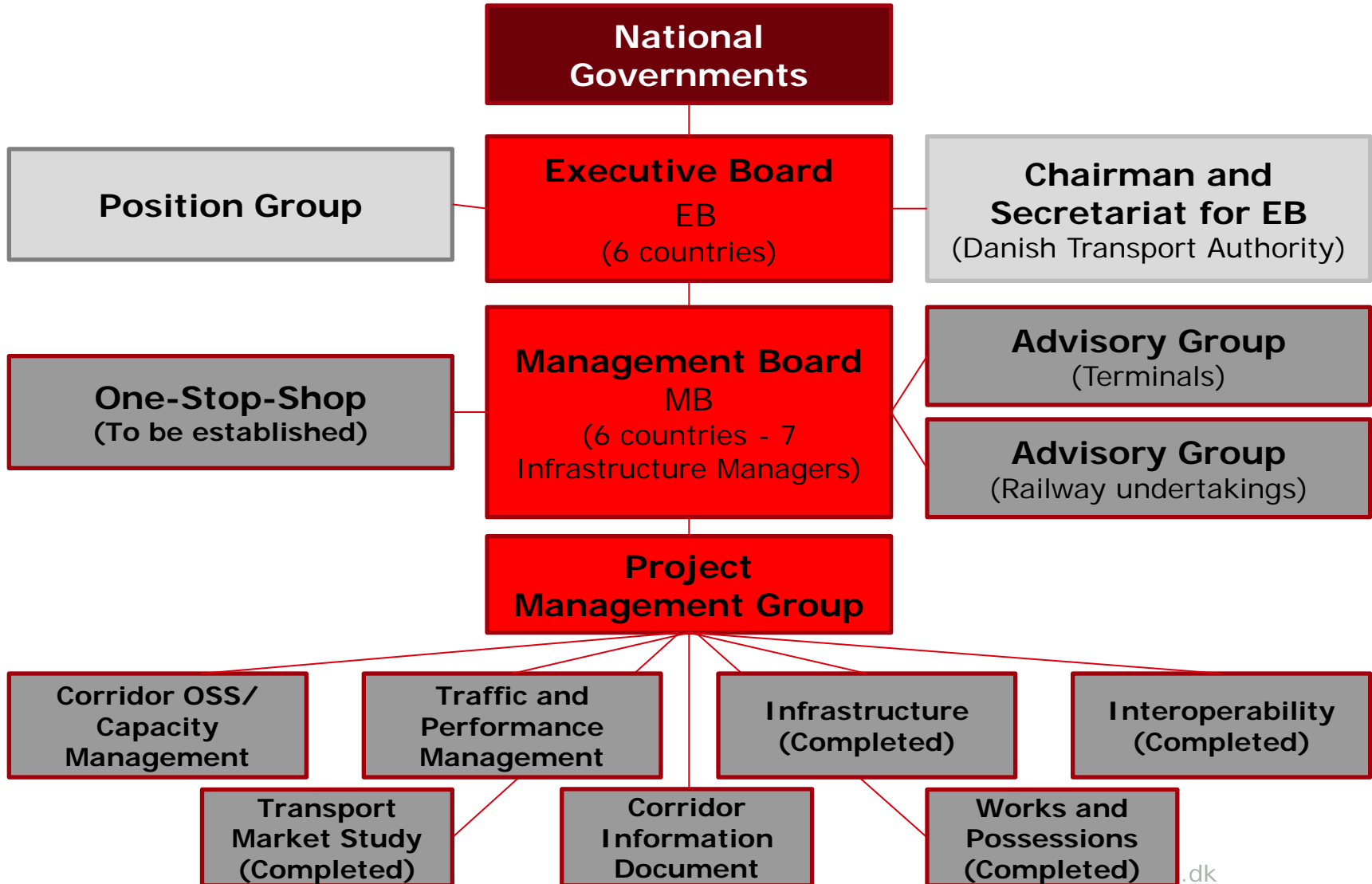
Develop a network

Focus on market and customer needs



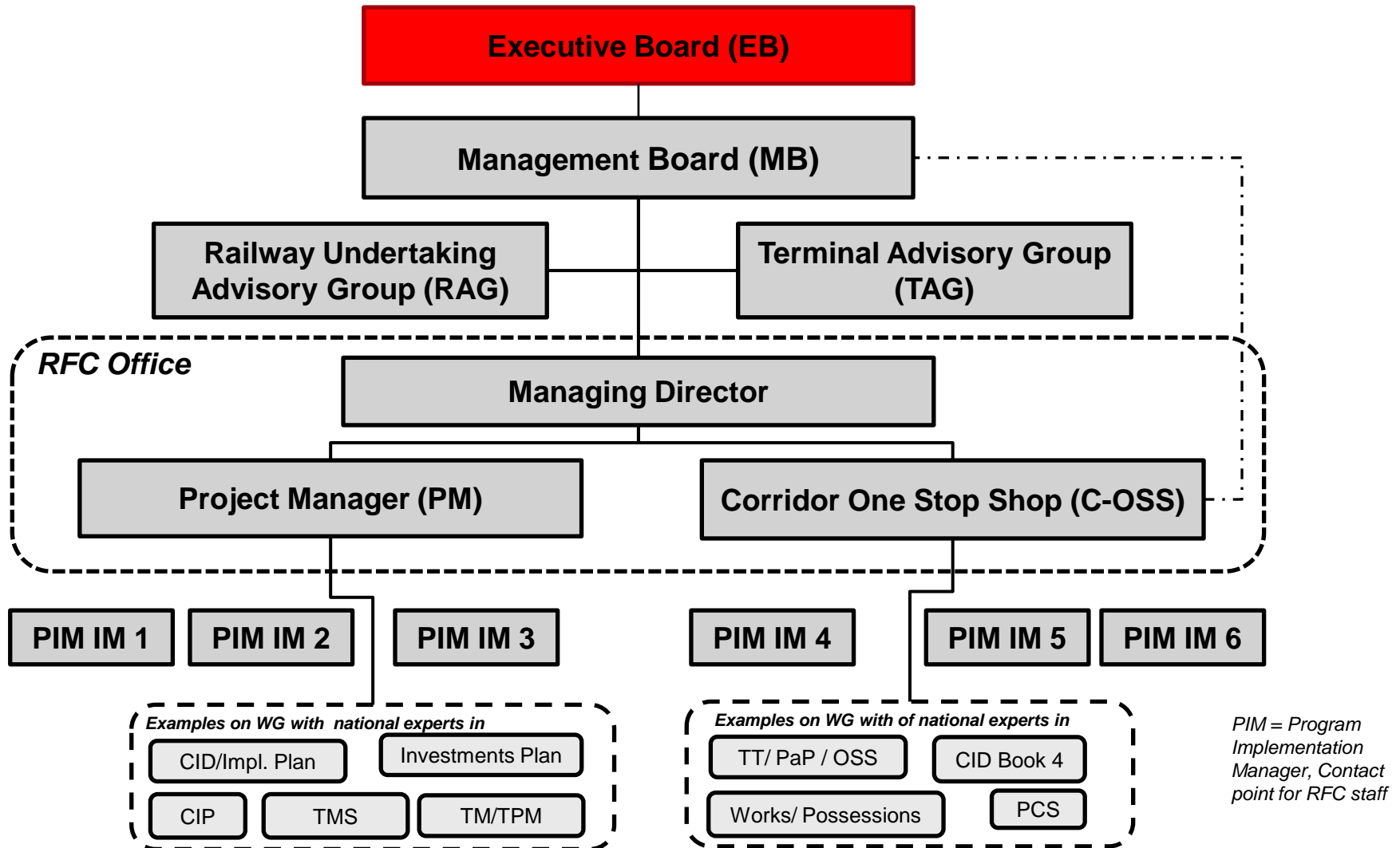
Legend
Corridor Area

Scan-Med RFC



Scan-Med RFC in Operation

National Governments



PIM = Program Implementation Manager, Contact point for RFC staff

Rail Freight Regulation

European Rail Network for competitive Freight

Mission of the Executive Board

- Defining *General Objectives*
- Defining *Framework for Capacity Allocation*
- Supervising progress on freight regulation
- Approving *Implementation Plan*



Transport Market Study and Implementation Plan

Two planning instruments

TMS is a basis for the present work

IP is the main document delivered one month ago

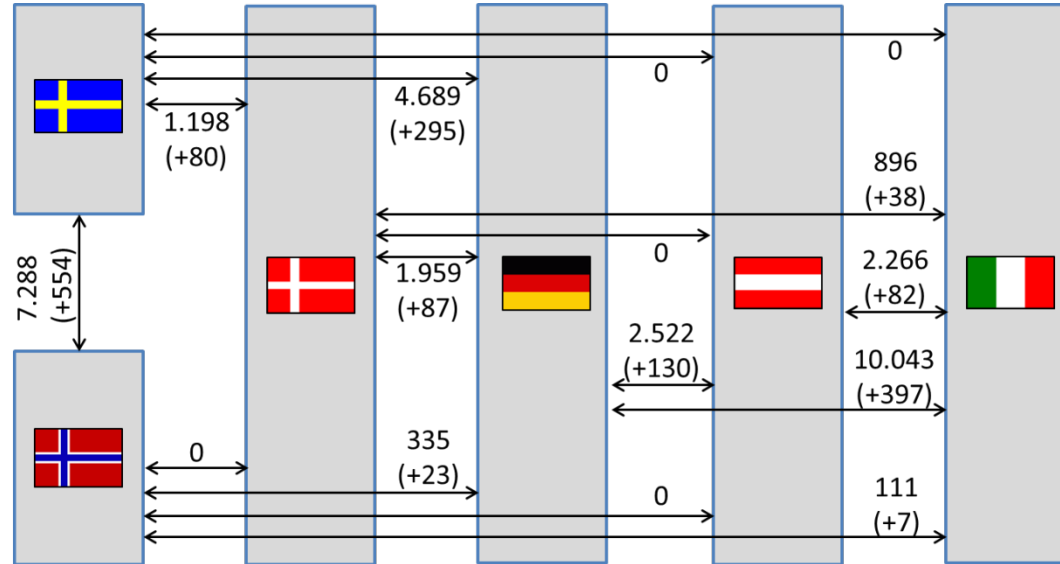


Selected results from the TMS



Forecasts and Volumes to 2017

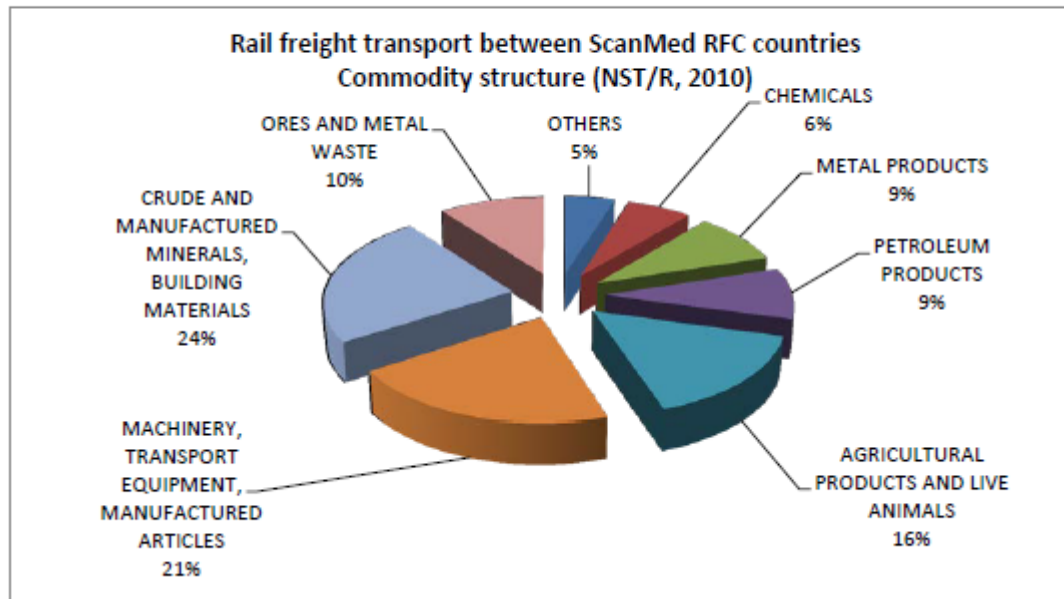
Additional Trains expected



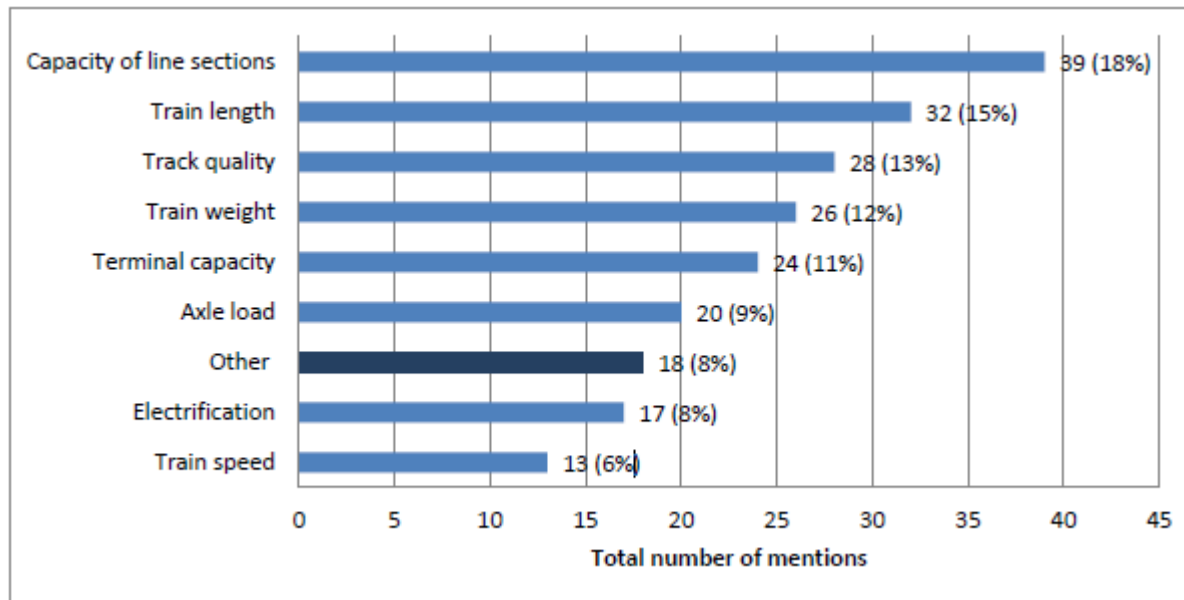


Commodity Structure

Figure 3-37 illustrates the overall goods structure of railway transport between the ScanMed RFC countries.



Infrastructure Bottlenecks



General Objectives

*A well performing competitive corridor with seamless service
and end to end control of train movements and wagons*

Quality

- Service planning with expedient service to applicants
- Traffic management to ensure operation in line with timetable

Capacity

- Supply of high quality train paths in line with market demand

Availability

- Planned capacity available to applicants/users
- Aligned business concept with terminals

Framework of Capacity Allocation

**One-stop-shop will receive pre-arranged train paths
and reserve capacity**

For freight trains crossing at least one border

The *Implementation Plan* defines the routes

The capacity is taken from the national capacity for freight traffic

**When applications conflict, longer and frequently used paths will
gain priority**

Control will be exercised by Regulatory Bodies

Implementation Plan

A process towards approval

Extensive document

- Mapping of bottlenecks
- Elements from *Transport Market Study*
- Objectives and performance
- **Quality of service and capacity KPIs**
- *Investment plan* (indicative)
- Measures to implement

Quality of service and capacity: KPIs

Quality

- **Punctuality level – percentage of trains running on time between points**
- **Delays caused by IMs**
- **Working days for OSS to answer questions from customers**
- **Assessment in customers' satisfaction survey**

Capacity

- **National and cross-border segments of PaPs**
- **Reserve capacity slots constructed after X-4**

Our "Big Brother"

The Multimodal Scandinavian-Mediterranean Corridor

Work Plan of the European Coordinator

Main conclusions on the railway:

- **Low rate of ETCS implementation (DE, SE, IT)**
- **Freight trains shorter than 740 m (SE, IT)**
- **Bottlenecks (DK, SE, DE, IT)**
- **Need for cross-border dialogues**

We assisted in paving the way...



Waiting for the volume to increase

White Paper: In 2030 shift 30 % of freight from road to rail



Estimation on increased freight

The Commission's Work Plan

Between 2005 and 2050:

Rail freight increases with 80%

Passenger transport by rail increases with 51%

”Rail is the backbone of Trans-European Transport Network”



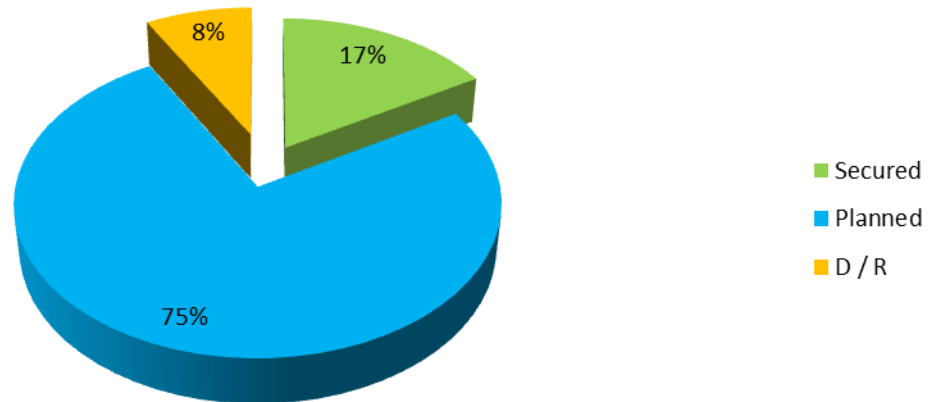
Planned Infrastructure



Overview of total costs of corridor-relevant infrastructure projects

Long Term

Total cost of projects - Long Term



Share according to financing status

Future Operation

10 November 2015 – Implementation made



Phase of operation

- *Capacity, effectivity, standards, and customers*
- **The coordination Freight Corridor and Core Network Corridor**
- *Coordination between all corridors*
- *Clarifying the job of the Regulatory Bodies*
- *Strengthening the links between the terminals*

How to find the *Implementation Plan*

Easiest to Google:

Scanned rfc

End of Implementation hcw@tbst.dk

