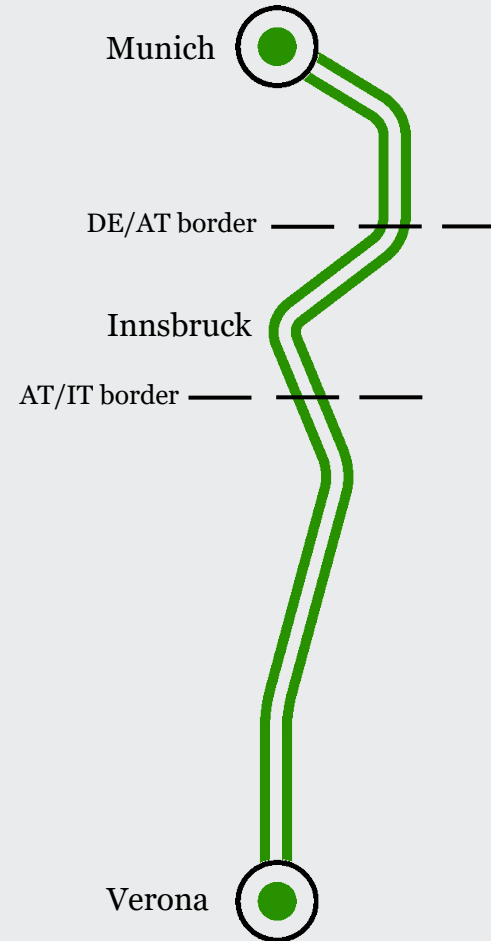


# The Brenner Corridor Platform

OVERVIEW OF THE WORK STATUS

# The Brenner Corridor

## AS A PART OF A WHOLE



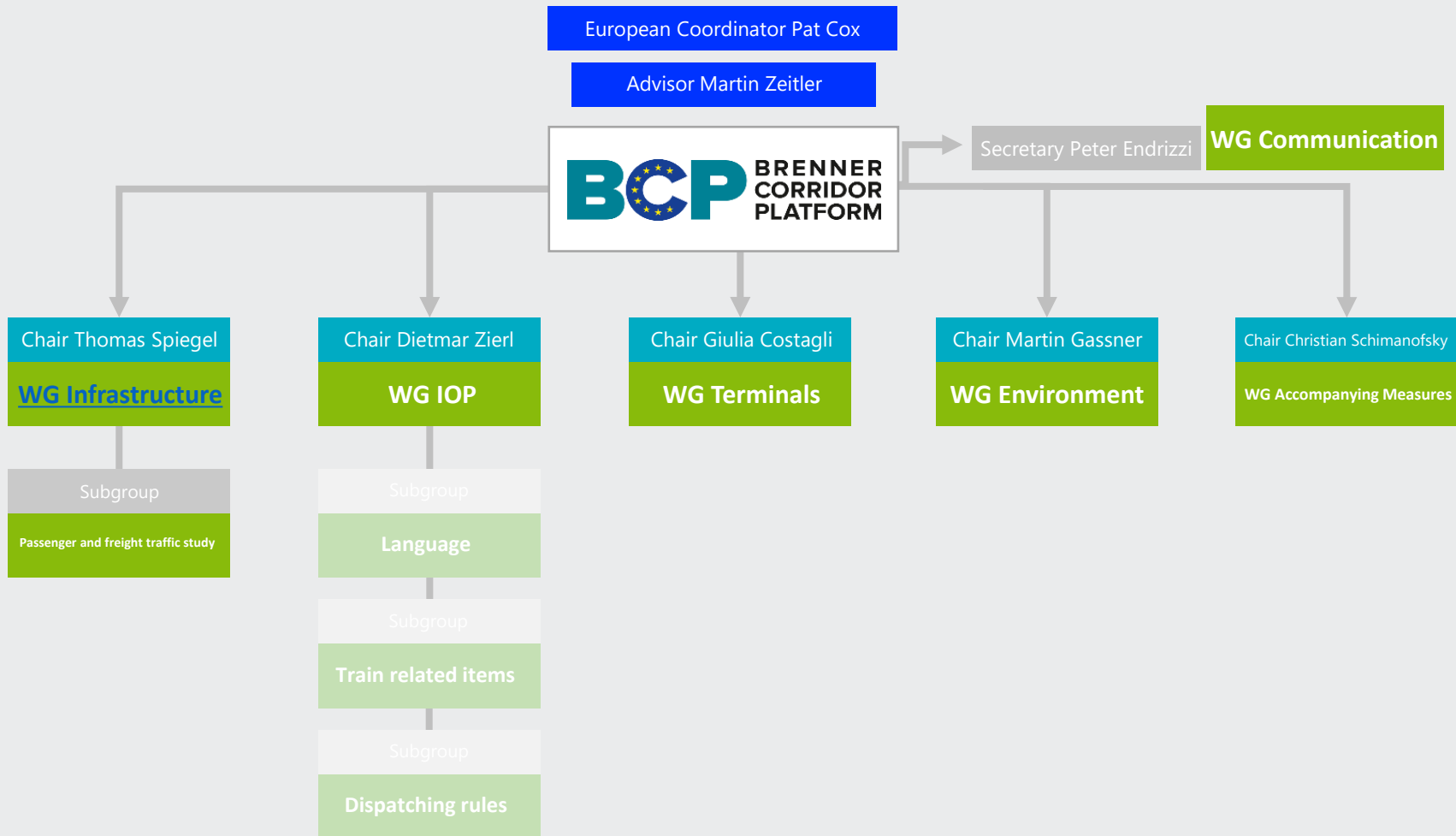
# The Brenner Corridor

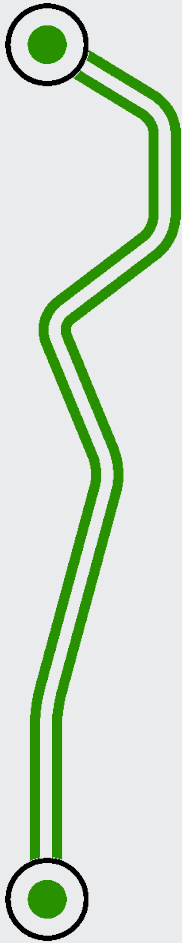
IN DETAIL\*



# The Brenner Corridor Platform

## OVERVIEW OF THE WORKING GROUPS





### ► **BCP WG Infrastructure**

- *Monitoring of infrastructure development along the entire corridor | Monitoring of traffic development and preparation of traffic forecasts | Capacity analyses of the rail network*
  - [BCP infrastructure scheme](#) for future infrastructure development on the corridor
  - [Technical table](#) showing the technical parameters in the corridor: status quo, 2030 and 2040

### ► **Subgroup WG Infrastructure: passenger and freight traffic study**

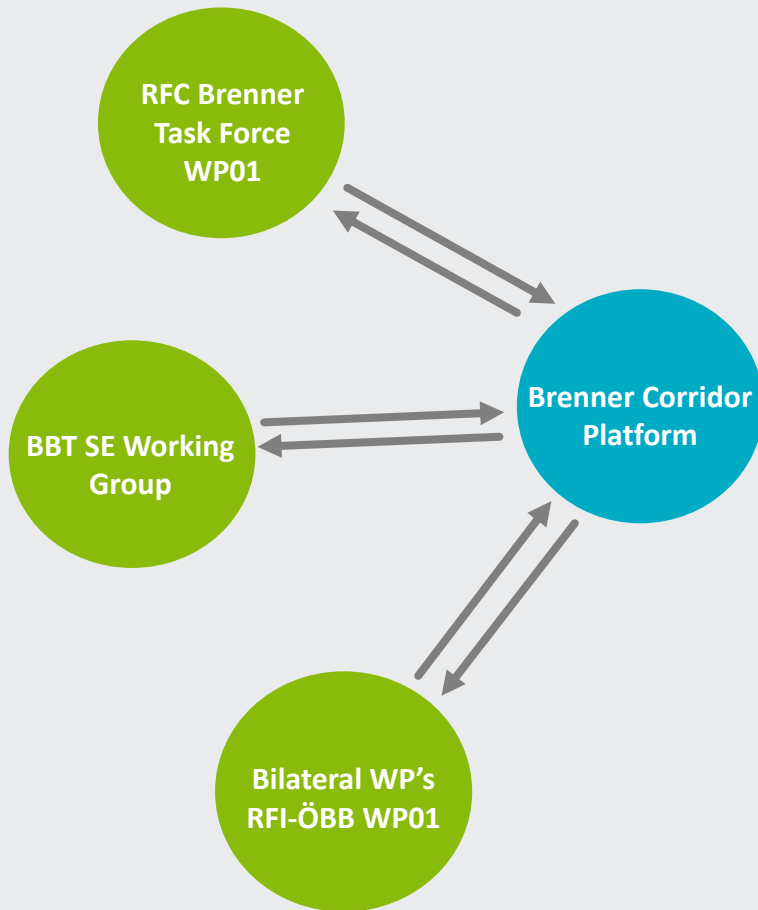
- *Elaboration a **rail passenger traffic study** to forecast the demand on long-distance rail traffic between Munich and Verona, which is expected to increase due to the significant reduction in travel time*
- *Elaboration of a uniform and harmonised **rail freight traffic study** to forecast the future freight traffic volume in the section from Munich in Verona*
  - Publication of the two studies end of spring/early summer

### ► **BCP WG Terminals**

- *Elaboration of a [terminal study](#) where all terminals with Brenner-related traffic were considered. First part of the study: analysis of the technical characteristics including the existing expansion plans of the terminals. Second part: integration of the forecast figures from the current freight traffic to identify whether the planned terminal capacity will be sufficient*
  - Publication of the study end of spring/early summer

- ▶ Held on 15th of October 2020 to discuss the consolidated comments of the IM's and the nat. MIN regarding the RU's questionnaire
  - Participation of both working groups including representatives of the EC, the national NSA's and ERA
  
- ▶ Key outputs:
  - Presentation by the representatives of the EC that various issues are already addressed on the basis of a Brenner issues table; coordination of the issues in order to elaborate jointly solutions
  - Commitment of the WG members to continue working on the open issues
    - More detailed elaboration of the technical table by WG Infra (removing possible ambiguities and including additional key figures)
    - Reorganisation of the WG IOP to address the open issues
      - Renomination and reduction of the WG members
      - Involvement of representatives of the EC
      - Involvement of representatives of the NSAs and the ERA

# COORDINATION WITH WORKING GROUPS OUTSIDE THE BCP



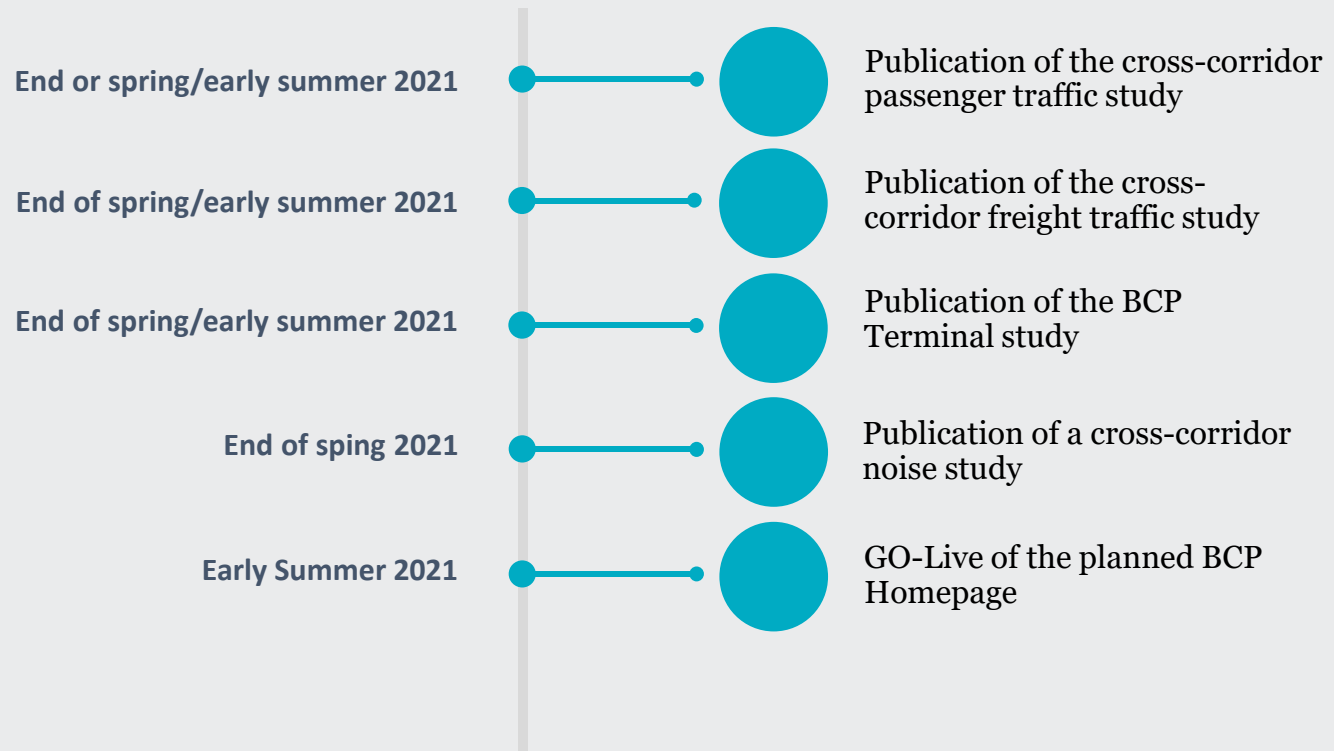
## Objective

- ▶ Avoiding the duplication of work
- ▶ Consideration of possible elaborated solutions
- ▶ Clear definition of the division of tasks in the case of possible overlapping topics

## Ensured by

- ▶ Regular participation of the BCP Secretary in meetings of the RFC Brenner Task
- ▶ Regular invitation of the RFC ScanMed Managing Director to official meetings of the BCP (Chairs Meeting, Workshop etc.)
- ▶ Dual representation of some members in the working groups
- ▶ Mutual updates on possible developments

# Overview BCP Outputs





END

May the corridor spirit be with us