



Bringing Sweden closer together



Karin Malmquist

Project manager

Haga Contract

West Link Project

Swedish Transport Administration



Why The West Link?

Train frequency can be increased, travel times made shorter and passengers can reach more destinations without transfers.

Increased capacity to Port of Gothenburg.



Göteborg - Göteborg

Second largest city in Sweden

Largest port in Scandinavia

- 60 % of containers to/from port by rail

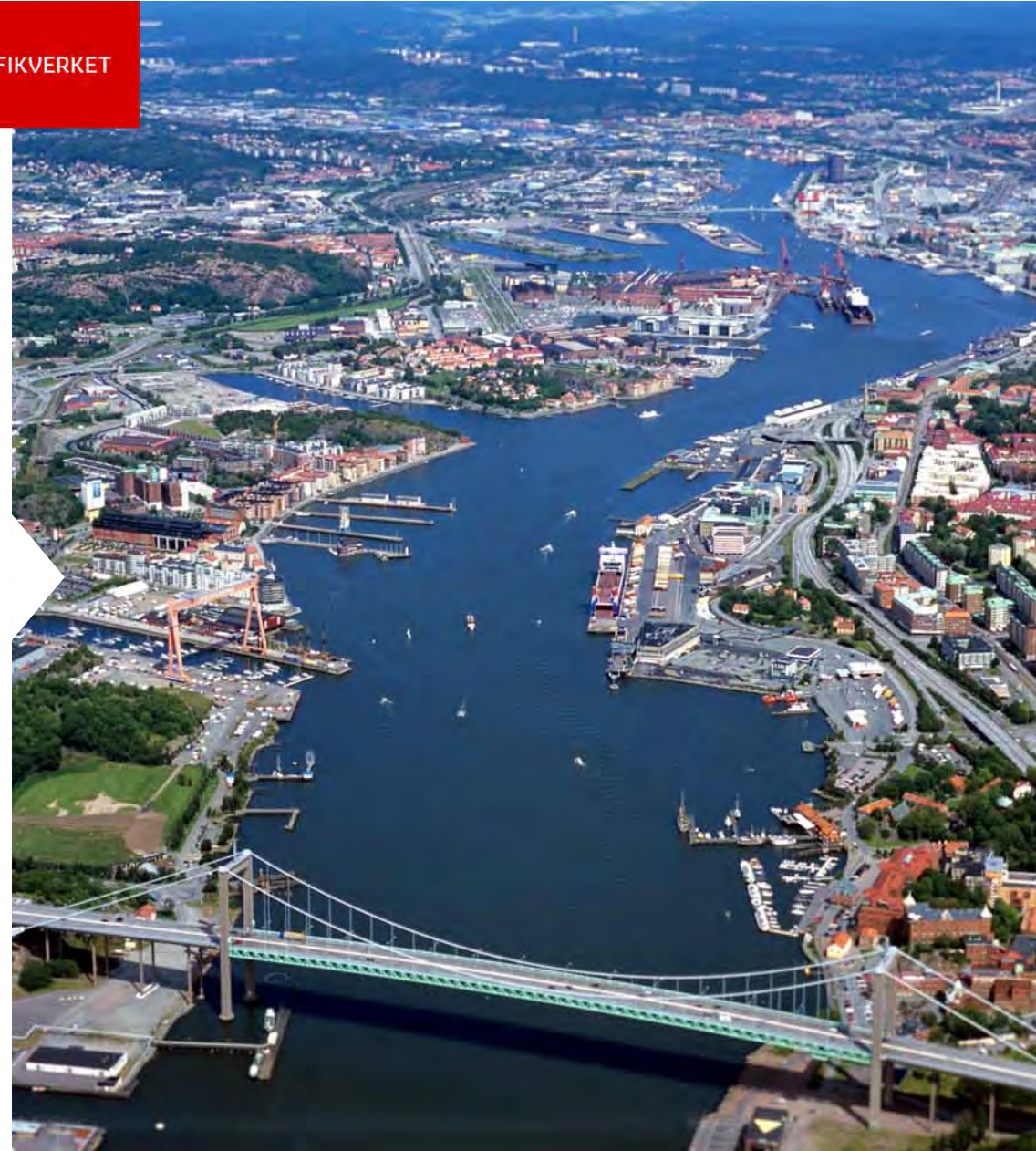
“Centre” of the triangle of capitals:
Stockholm-Oslo-Copenhagen

Göteborg

Örebro

Gothenburg and Western Sweden are facing major challenges

- Gothenburg is a transport hub, but the rail system has not enough capacity.
- The proportion of travellers travelling by public transport is low.
- The city will grow by almost a third and Western Sweden by a fifth over the next 20 years.
- There is great potential to build and densify in the central city.



The situation 2021 in the railway system

- Low punctuality.
- The capacity is full on Gothenburg Central station and incoming tracks.
- The platforms and tracks are already extended.
- Low robustness in the system.



The situation in Western Sweden's rail system 2021

The lack of track capacity is an obstacle to the development of long distance passenger traffic, freight trains and regional traffic.

Today, there is no room to increase traffic further when the capacity ceiling is reached in the railway system.



Projects in western
Sweden in National Plan
(rail, maritime)

Total project cost >10 mill.euro

Älvängen sidings

The Port of Gothenburg Fairway

Göteborg Port Line

Västlänken

Olskroken

Göteborg Airport connection

Varberg double track

Halmstad C

Ängelholm-Maria double track

Maria-Helsingborg double track

Åstorp-Teckomatorp



= TEN/CEF funding



Why The West Link?

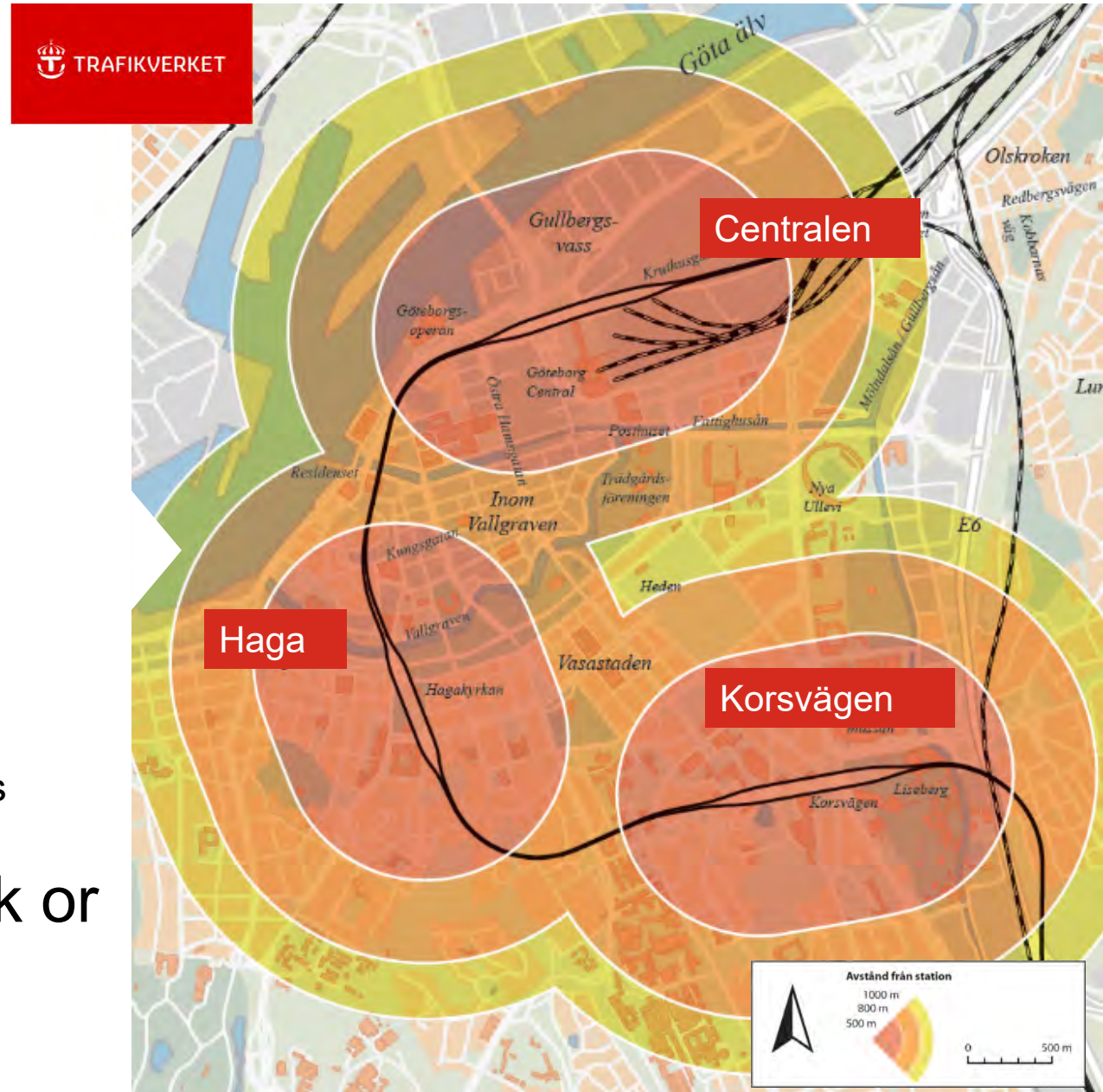
Relieves local public transport with more central destinations.



Travel easier, faster and with fewer changes

100 000 people who live,
and **130 000**
people who work in Gothenburg,
will have walking or cycling distance
to one of three new underground stations

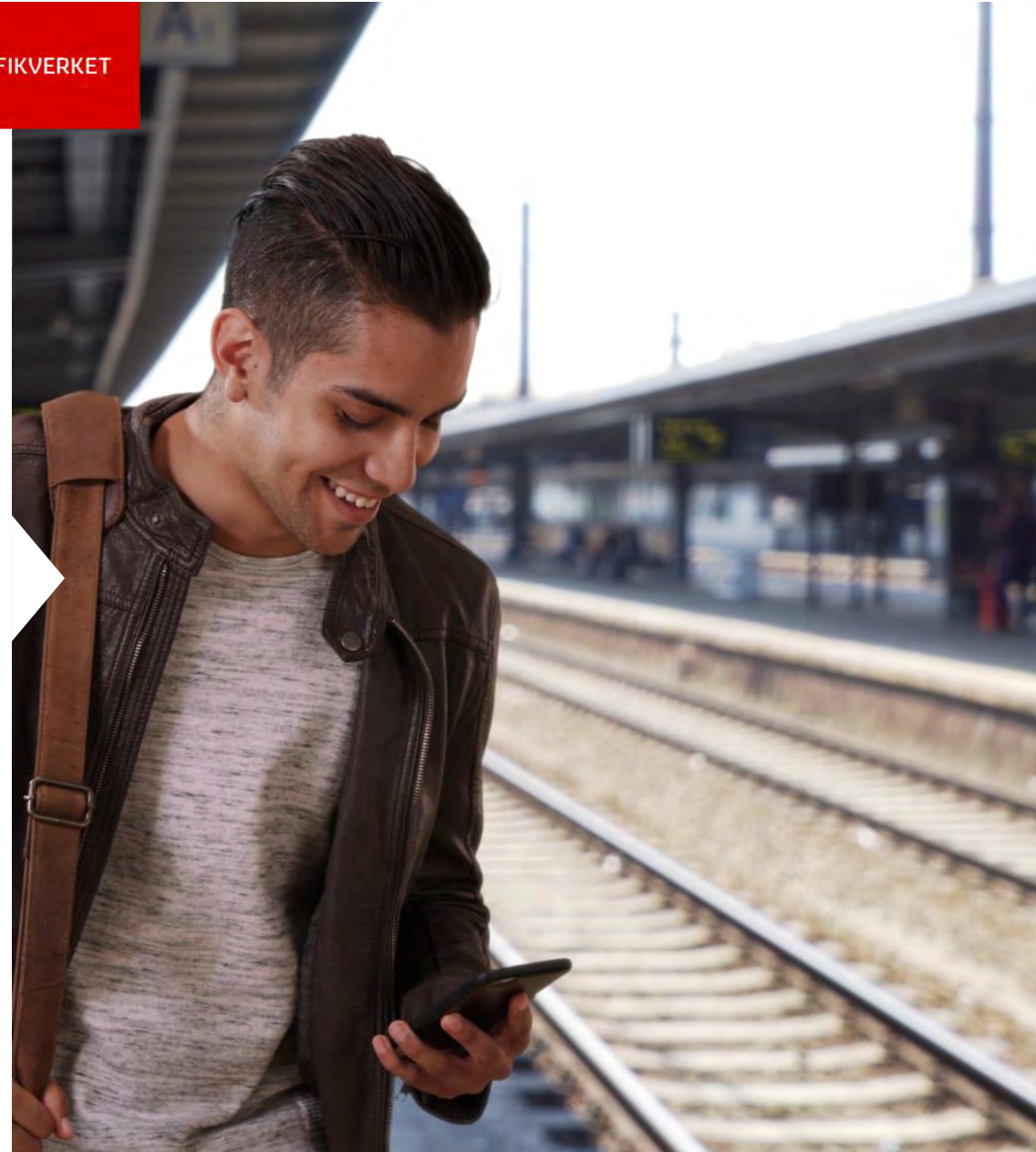
It gives you the choice **to live, work or
study** in other parts of the region



Smoother train journeys

As we improve Gothenburg's hub, we release a plug that benefits all locations in Western Sweden and increases accessibility to the entire country and Europe.

Increased capacity gives better punctuality, fewer stops and room for more freight and passenger trains.



Why The West Link?

A corner-stone for Gothenburg becoming a sustainable urban node in the TEN-T network.

Göteborg C

Haga

Korsvägen

More space for urban development

When more journeys take place under ground, areas in the urban environment are released and give more space for urban development.



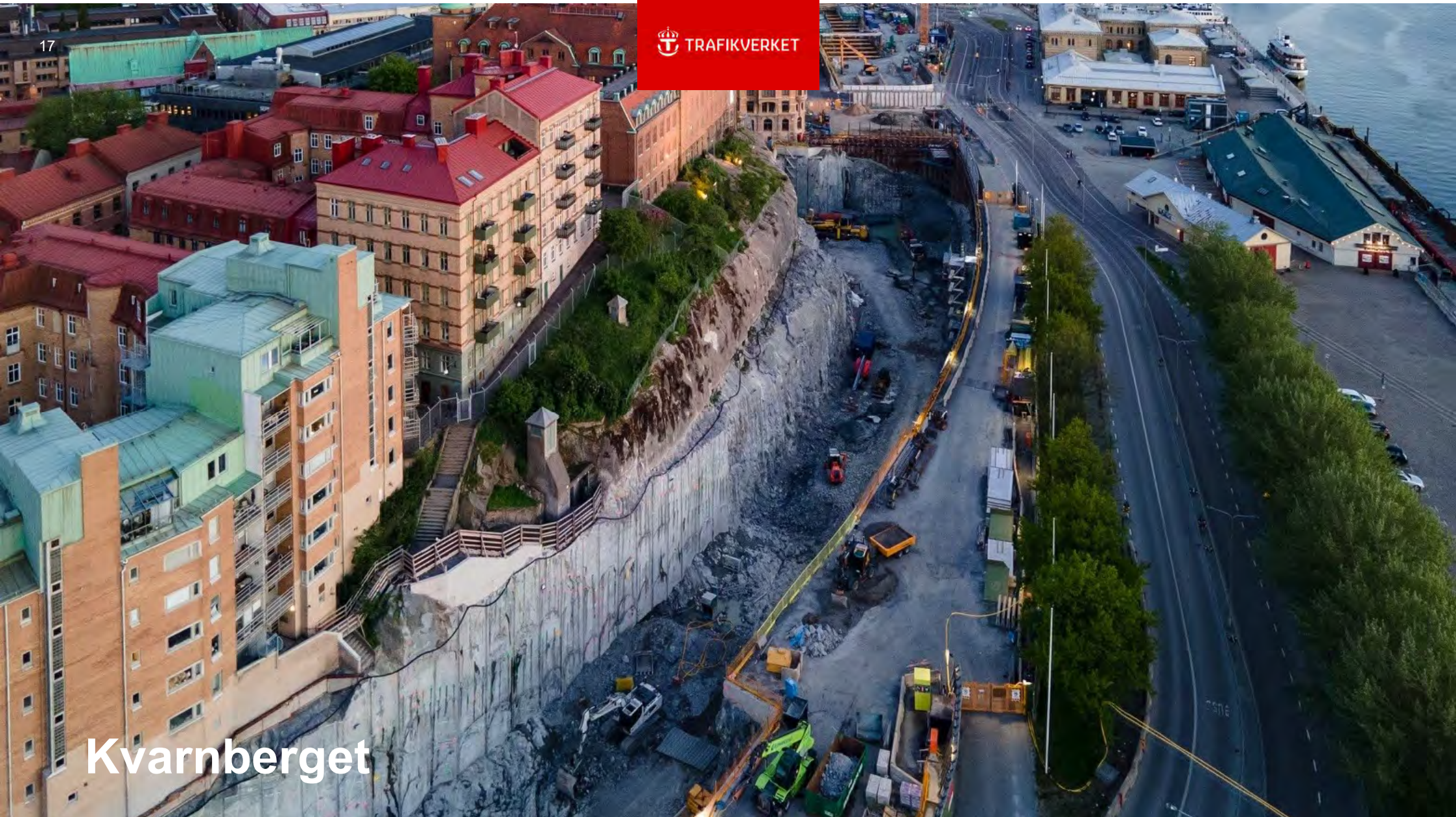
Why The West Link?

**Creating a more capacity and connections to
Port of Gothenburg**
The largest port of Scandinavia



Centralen

Kvarnberget



Haga









Korsvägen

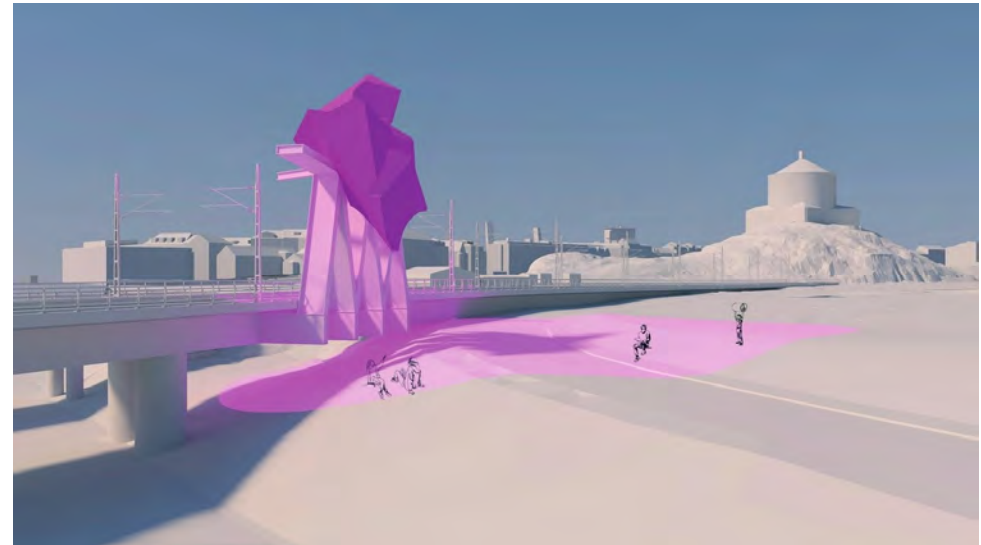
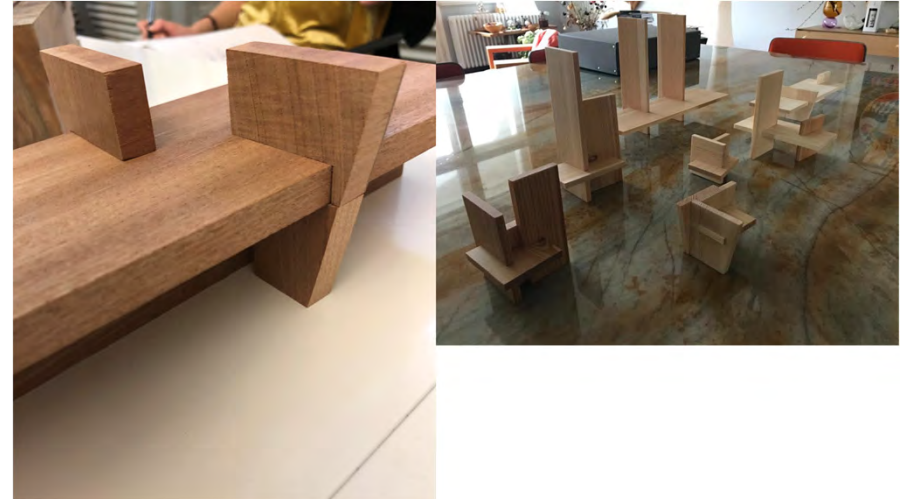


Art from world famous artists

Tongue and Groove - Danh Võ

Rainbow Snake - Huang Yong Ping

bLINK - Katharina Grosse





Centralen

Korsvägen

An aerial photograph of a city intersection, likely in Stockholm, Sweden. The scene shows a tram crossing a street, with pedestrian crossings and a large, modern, low-rise building with a green roof. The surrounding area is filled with historic red-brick buildings and lush green trees. The sky is overcast, and the overall atmosphere is urban and vibrant.



Haga



12

minutes including stops
at the three stations is the
estimated travelling time
through the tunnel



20

 billion SEK at 2009's prices


Tripled

train journeys will be
made possible
by the West Link in 2035

Fast Fact The West Link

6,6

 km through tunnel

4

 km tunnel built in rock

2,6

 km concrete tunnel
built in soil and mud

3



new underground stations
will reduce the pressure
on local public traffic



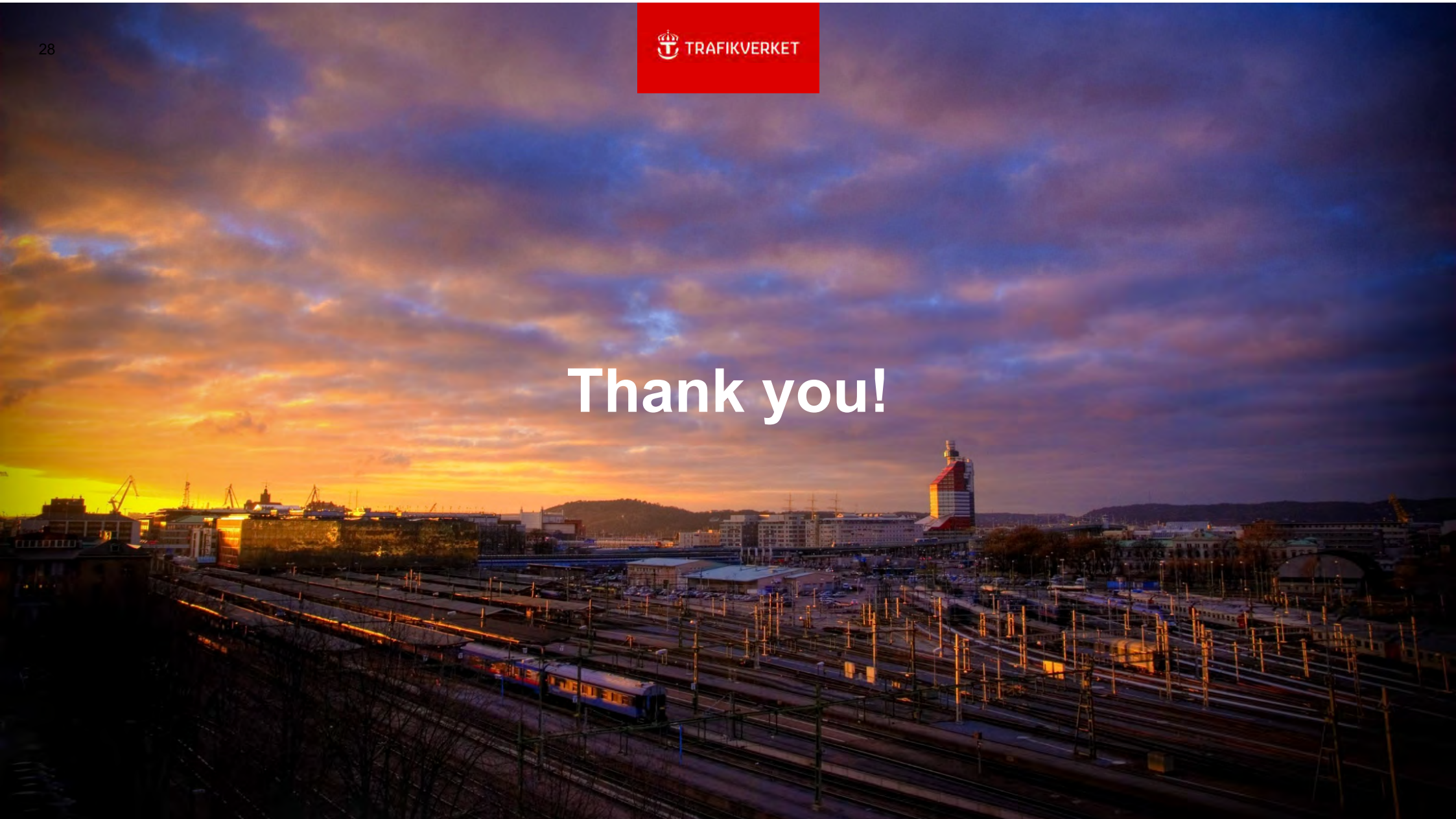
The West Link
is part of the
West Swedish
Package.



8

 km double tracks

Thank you!





TRAFIKVERKET

Karin Malmquist

Project Manager
Haga station
West Link

Karin.malmquist@trafikverket.se

Mobil: + 46 702 946 687

Trafikverket

411 04 Göteborg
Telefon: 0771 -921 921
trafikverket.se