



## ONE-HOUR TURKU RAIL LINK

# BUILDING THE FUTURE OF RAILWAYS

Working group meeting: Scandinavian-Mediterranean Core Network Corridor Microregion "Bothnian" 5<sup>th</sup> of May

Chairman of the Board Minna Forsström



# Building the Future of Railways

High-speed, double-track rail link  
between Helsinki and Turku.

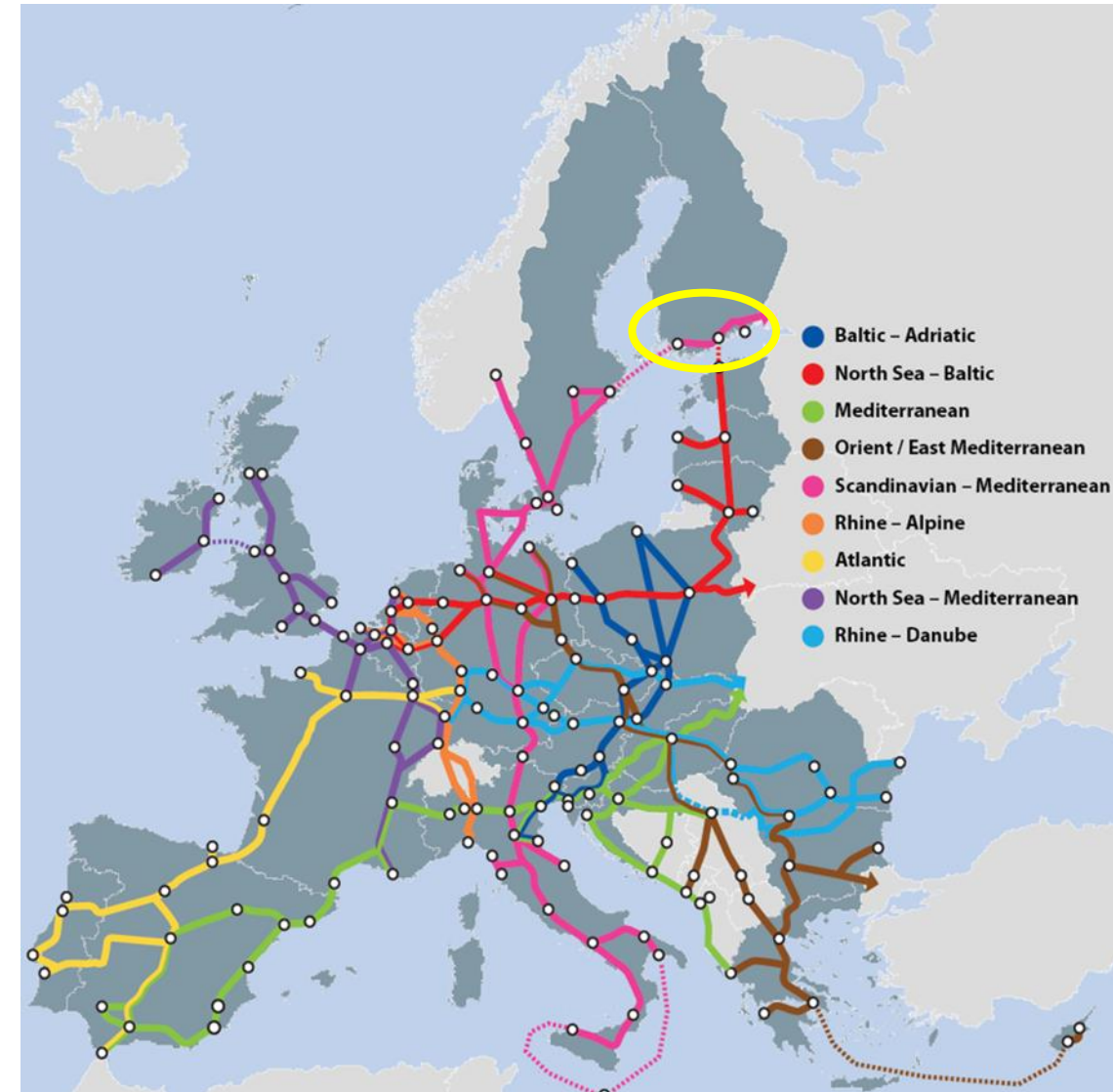
The project brings new opportunities  
for the growth and development  
of the regions.

Choices that benefit  
the environment

Part of the Trans-European  
railway network

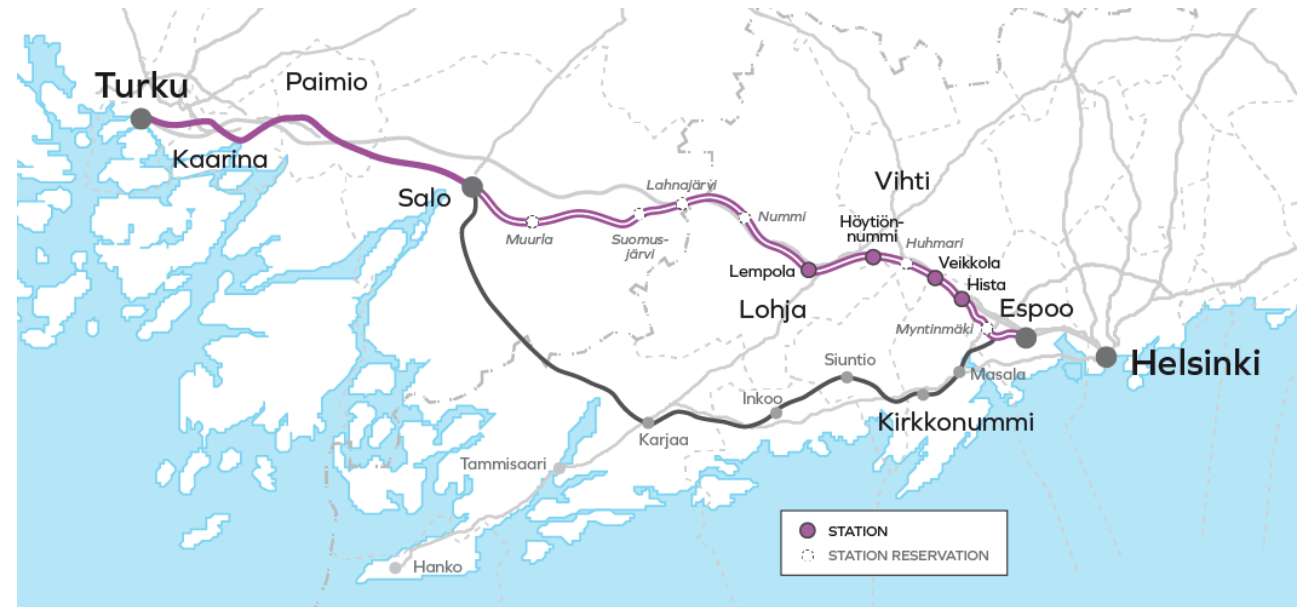
# Part of the Trans-European railway network

- One-hour Turku Rail Link is part of the Scandinavian-Mediterranean Corridor of the Trans-European Transport Network (TEN-T). Helsinki and Turku are both nodal points in the TEN-T corridor.
- A faster train connection will open up new opportunities for international train travel to various destinations in Europe.
- One-hour Turku Rail Link will also improve the connection between Stockholm and St. Petersburg, which will make train travel between these cities more attractive alternative.



# High-speed, double-track rail link

- At the moment, passing loops are used to allow trains travelling in opposite directions to pass each other. Building a double-track railway line will increase the line's capacity and allow trains travelling in opposite directions to run faster and smoother.
- One-hour Turku Rail Link would make the fastest travel time between Helsinki and Turku approximately
- 73 minutes for Express trains and 86 minutes for IC trains.
- The travel time from Helsinki to Lohja would be approximately 35 minutes on an IC train and approximately 41 minutes on a local train.





# One-hour Turku Rail Link Ltd

- SPV type -company was introduced to continue Turku-Helsinki rail development
- The project company **One-hour Turku Rail Link Ltd** (Turun Tunnin Juna Oy) was established in December 2020.
- The company was set up to handle the preparation and funding of track design (rail planning) for the Espoo-Salo direct railway line and Salo-Turku double-track railway line until construction is ready to begin.
- The shareholders of the company are Government of Finland and the cities of **Turku, Espoo, Helsinki, Salo, Lohja, Vihti** and **Kirkkonummi**.
- Handing over from the Finnish Transport Infrastructure Agency is going on



# The team, key players

**Pekka Ottavainen** (M.Sc.Eng.) will start as the One-hour Turku Rail Link Ltd's Managing Director on 1<sup>st</sup> of July 2021. Previously he has served as President and CEO of STUK International Ltd. Ottavainen has solid experience in various mega projects on the energy sector. In addition to STUK International, he has worked at companies such as FinNuclear, Voimaosakeyhtiö SF and Pohjolan Voima and has participated in nuclear and other large scale power investments.

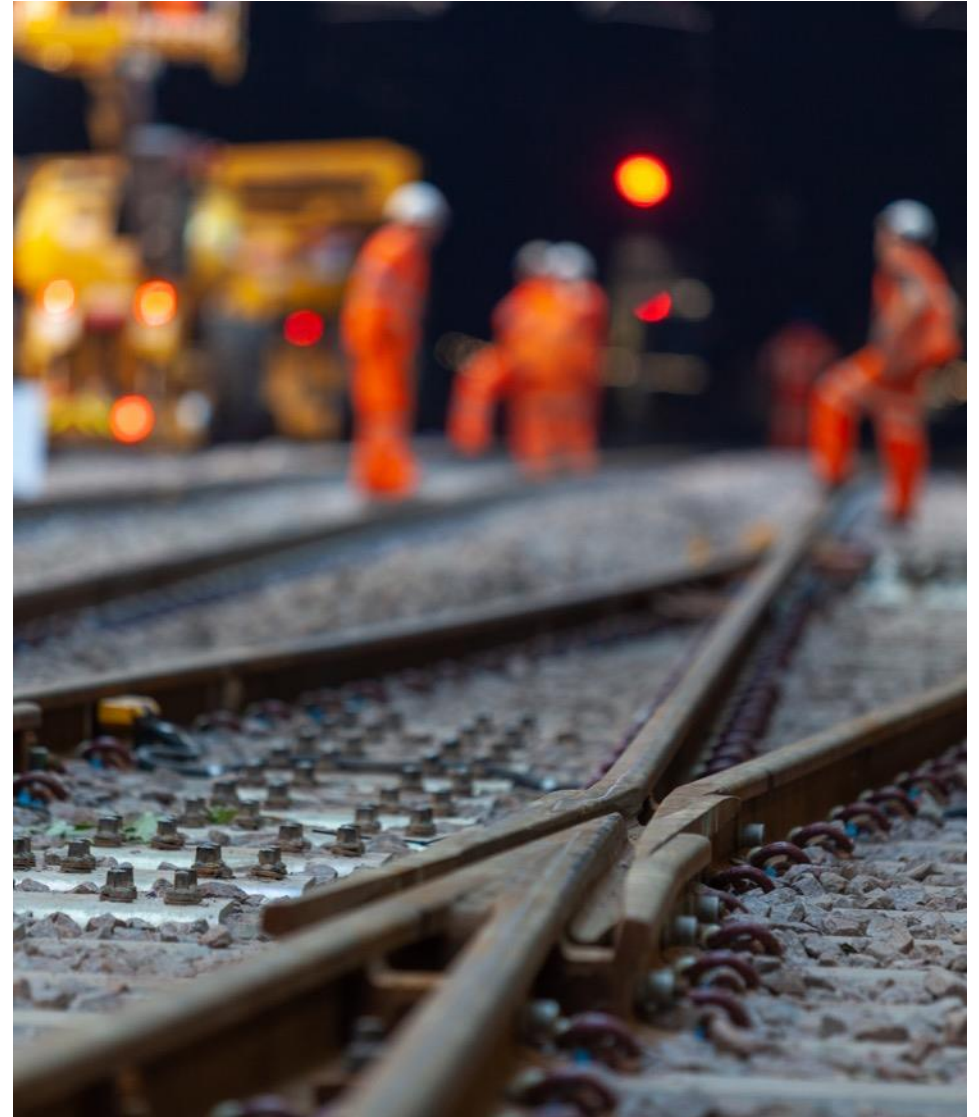


On 20<sup>th</sup> of May, **Annika Salokangas** (M.Sc.Eng.) will start as a new project manager of One-hour Turku Rail Link. Salokangas has more than 12 years of experience of railway projects. Salokangas has most recently worked as a project manager at the Finnish Transport Infrastructure Agency, and before that as a head of department at engineering company Sitowise and as a design group manager at VR Track.



# Project schedule

- The Finnish Transport Infrastructure Agency was responsible for the planning phases completed earlier.
- Turku One-hour Turku Rail Link Ltd will be responsible for track design for the project. After this phase of the planning is completed, the project moves to the construction phase.
- According to the proposed schedule, the planning should be completed by the end of 2023.
- In spring 2021, the rail plan -phase is in progress for the rail section between Espoo and Salo, and the rail section between Salo and Hajala. The next step during 2021 will be to initiate the track design phase for rail sections located further to the west.
- If the project goes according to plan, the construction will be fully completed and the railway lines ready for traffic at the beginning of 2030's.





# Recent actions

- Currently the environmental impact assessment (EIA) procedure is still ongoing due to some additional clarifications requested. It is estimated that the procedure will be ready by the end of the year. The results of EIA must be taken into account in railway planning.
- Because of reservations for new stations the new rail connection requires some changes in land use planning. Appeals concerning changes in regional land use plan are currently under consideration in Helsinki Administrative Court. Decisions are expected earliest by the end of the year.
- Finalization of co-operational agreement with the Finnish Transport Infrastructure Agency
- Information management system set up, studies and investigations on the green field areas, rail planning first steps
- Opening the communication channels, webpage: [www.tunninjuna.com/en](http://www.tunninjuna.com/en)
- Recruitments going on , consulting services activated,
- Active and experienced board, Company governance finalization



# Funding

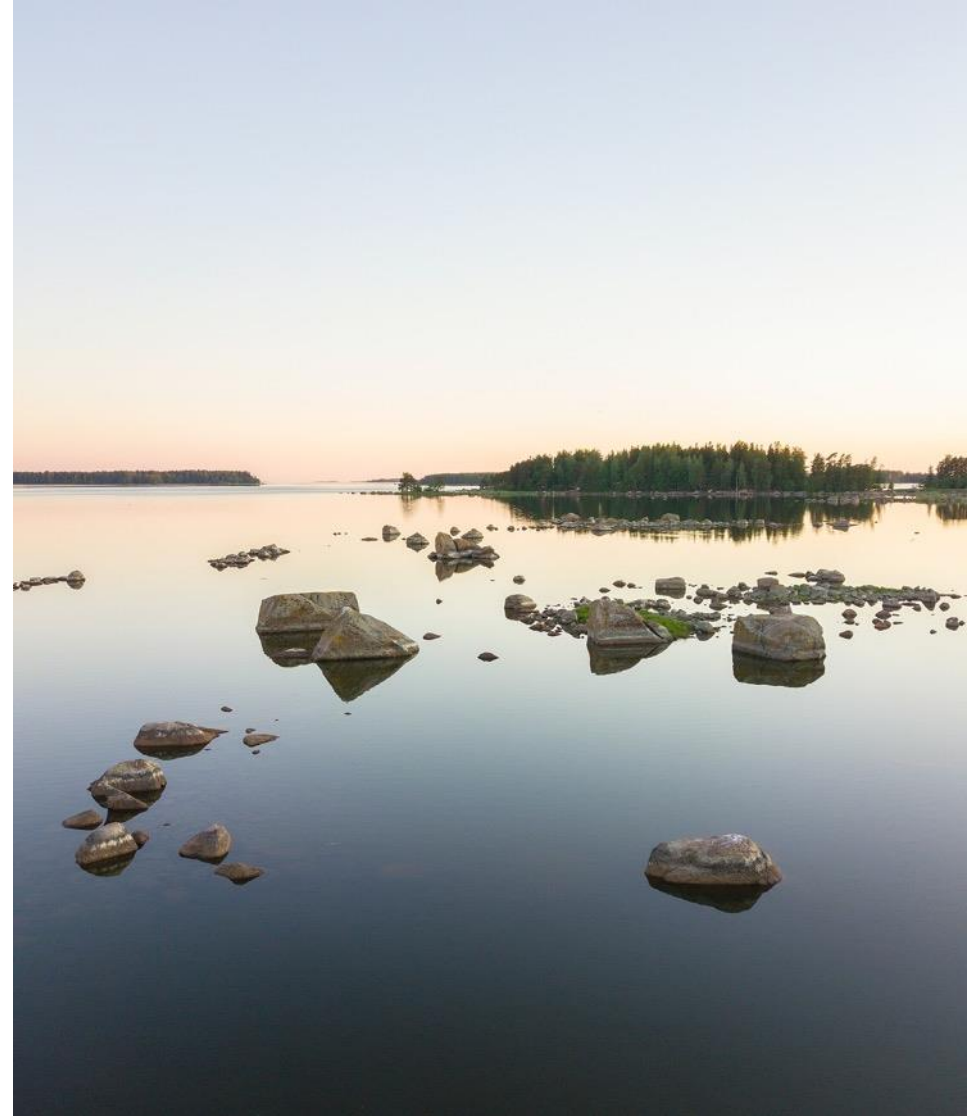
- The costs of planning the new direct line from Espoo to Salo via Lohja and the Salo-Turku double-track railway line are estimated to be approximately **EUR 75 million in total**. The project company One-hour Turku Rail Link is owned by state with share of 51 % and seven municipalities (49 %).
- The shares of the costs of municipalities involved in the project are as follows:
  - City of Turku EUR 10.25 million
  - City of Espoo EUR 10.25 million
  - City of Helsinki EUR 5.80 million
  - City of Salo EUR 3.74 million
  - City of Lohja EUR 3.74 million
  - Municipality of Vihti EUR 3.74 million
  - Municipality of Kirkkonummi EUR 0.38 million
- As an important part of promoting the Trans-European Transport Network (TEN-T), EU funding has also been awarded to planning the project (Connecting Europe Facility, CEF). The EU funding awarded under the CEF will cover 50 per cent of the costs (EUR 37.5 million at maximum).



Co-financed by the Connecting Europe Facility of the European Union

# Choice that benefit the environment

- Climate change and the climate targets set by Finland require developing the Finnish transport system and promoting sustainable mobility by shifting to environmentally friendly transport options.
- One-hour Turku Rail Link gives everyone an opportunity to make environmentally friendly choice in their everyday lives. The new railway line will make the travel time between Turku and Helsinki faster by train than by car, which will encourage people to choose the train over their car or the bus.
- Once completed, the One-hour Turku Rail Link will offer an alternative means of commuting between Turku and Salo, as well as within Western Uusimaa by incorporating new localities to the railway network. Primarily intended for passenger trains, the new railway link will also be available for freight trains. This will help reduce the emissions from transport even further.





BUILDING THE FUTURE OF RAILWAYS