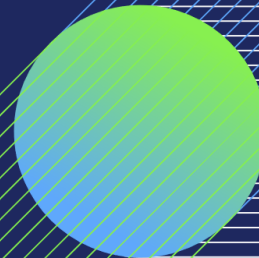


Ofofbanen in the New National Transport Plan

Sven Marius Utklev Gjeruldsen
International Affairs department, Bane NOR



National Transportation Plan (NTP)

- Every four years, the National Transport plan lays out the development plans for the Norwegian rail sea, air and road infrastructure for the next 12 years
- This spring, the white paper NTP covering 2022-2033 was published
- The plan contains several projects with ScanMed CNC relevance



The Ofoten line



- The Ofoten line is by far the line transporting the most tonnage in Norwegian rail freight
- The tonnage is mostly iron ore, however the railways holds a market share of 31% in intermodal transports between Oslo and Narvik (through Sweden)
- The intermodal transports are by conservative estimates expected to grow by 45% in the years leading up to 2050
- Nordlandsbanen is also important in serving northern Norway through intermodal connections

Investment projects the coming years

- There are plans in NTP for an investment package for intermodal rail freight
- The plans will allow 740 metre long trains to travel Oslo-Narvik
- Investments will thus also allow 740 meter long trains on the Kongsvinger Line from Oslo to Charlottenberg (=TEN-T core)
- Investments are mainly aimed at new and longer crossing loops
- There are also projects increasing capacity on the Eastern Line (Østfoldbanen)



Next steps

- The NTP white paper is due to be finally decided by the Parliament before summer. Usually NTP is one of the topics raising most debate in Parliament – everyone fights for their constituents
- There is also a Concept Study looking into different transport solutions serving the northern part of Norway – including a new railway line serving the areas north of Narvik. The Concept Study is expected to be finished by 2023



Thank you for your attention!

